



2015 Lorain County Fall Farm Tour

Sponsored by
Lorain County Farm Bureau

Saturday
September 26, 2015
12:00 – 5:00 PM

Come and enjoy the value-added agriculture that
Lorain County has to offer!

How to get around?

The map on the back of this brochure shows a route for the drive-it-yourself tour. (The tour will be marked with signs starting at Stop 1.) **You may create your own route or start anywhere on the tour you wish.**

Inside this brochure is a description of each of the 5 stops featured on this year's farm tour.

Parking

Please observe any parking instructions at our hosts' farms/businesses. We are their guests – they are participating as volunteers.

Door Prizes

- ◆ 4 Door Prizes for Adults
- ◆ 2 Door Prizes for Children ages 11-17
- ◆ 2 Door Prizes for Children ages 0-10
- ◆ To qualify for door prizes - Pick up a door prize card at the 1st stop you visit and have it stamped at all five stops. Please put your card, complete with name, address, and phone number, in one of the door prize boxes provided. The winners will be drawn and notified approximately 1 week after the tour.

Each stop is looking forward to having you as their guest and having the opportunity to share with you their role in Lorain County agriculture.



Enjoy the country view and beautiful agriculture showcase in southern Lorain County.



Stop 1 – Lorain County Joint Vocational School ***15181 State Route 58, Oberlin***



The Lorain County JVS is a high school that serves primarily juniors and seniors and offers career technical training. Students from thirteen local associate schools throughout the county choose a vocational area to specialize in. Students spend half of their day in academic classes required for graduation and the other half of the day in their specific career technical program area learning a trade. The school is 10 acres under one roof.

Agricultural programs at the school include Industrial Equipment Mechanics and Landscape and Greenhouse Management. They are both involved in FFA. Landscape and Greenhouse Management started in 2005. The greenhouse is a 40'x60' fully automated greenhouse. The program provides training in outdoor maintenance, floral design, nursery, and greenhouse management.

Ag and Industrial Equipment Mechanics is one of the original programs when the JVS opened their doors. The program provides training in repair and maintenance of agricultural, industrial, recreational, and lawn and garden equipment. After graduating from high school students can gain employment or attend a 2 or 4 year college.

Stop 2 - Sacred Dreams LLC

46597 State Route 303, Wellington



Sacred Dreams LLC is a full-service equine facility owned and operated by Dave and Kim Depinet. Sacred Dreams LLC is conveniently located just west of State Route 58 on State Route 303 in Pittsfield Township. With over 25 years of experience, Kim offers lessons and training to help establish lasting partnerships between horse and rider. Natural Horsemanship Techniques are core elements that go into transforming problem horses into reliable partners.

The farm offers lessons and training in Western Pleasure, English Pleasure, Trail Riding, Barrel Racing and Beginner Horsemanship. Sacred Dreams LLC's newly expanded parking lot makes it convenient for clients to haul

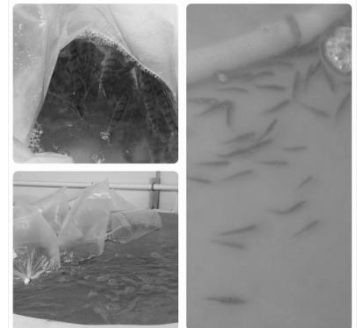
in their own horses for lessons. If unable to haul in your own horse, a signature lesson horse will be available. We are excited to have this opportunity to share with the community what our facility has to offer.

Hearts, Homes and Hooves 4-H club will be having a bake sale at this stop. Lorain County Storm Water District Management will also have an informational table at this stop.



Stop 3 – Lettuce Heads **Aquaponics and Farm**

50477 Jones Rd, Wellington



Lettuce Heads Aquaponics and Farm is a family collaboration. Kurk, and Nick, (farming with Kevin and Ken (4th generation) will signify the 5th generation of Ziegler's to farm this piece of land. While our farm has taken many shapes over the years, our ideals have never wavered. We are God-following, hard-working, honest men who try to see the best in everyone. Lettuce Heads goal is to grow great food and market it to the local area. We hope that growing great local food will—in some small way—strengthen our community. Our main products are lettuce, kale and herbs, as well as, seasonal vegetables, microgreens, Tilapia and Yellow Perch.

Ag Credit Country Mortgages will have an informational table set up at this stop.

Stop 4 – Mark & Joyce Ziegler’s Farm ***47301 Jones Rd, Wellington***

Welcome to the Ziegler farm! Owned by Mark and Joyce Ziegler, the farm was purchased by Mark’s father in the 1950’s. In 2004 the hoop barn and kitchen were built specifically to custom raise calves. The calves arrive as newborns and stay until they are six to eight months old. While they are here they are cared for, vaccinated and pampered until they are ready to return to their owners’ farm.

The Zieglers also operate a produce stand where locally grown fruits and vegetables will be available. Also featured at the farm is the Honey Bee Mine apiary producing many varieties of honey run by Morris Hinton.

Farm Credit Mid-America will have an informational table set up at this stop.



Stop 5 – Ohio Grass-Fed Lamb ***26545 Hawley Rd, Wellington***

Ohio Grass-Fed Lamb is a small family farm owned by Linda & Daniel Wasil. It was started 15 years ago when the Wasil’s decided to move from Washington D.C. to start their farm. Their goal is to bring you the healthiest and tastiest grass-fed lamb available. Our lambs are born in springtime onto lush, green pasture and remain on pasture throughout their growth. Our pastures are pesticide and herbicide free, and have been planted and managed to provide an ideal diet for grass-fed animals. The lambs are moved to fresh pasture every few days, and are never grain.

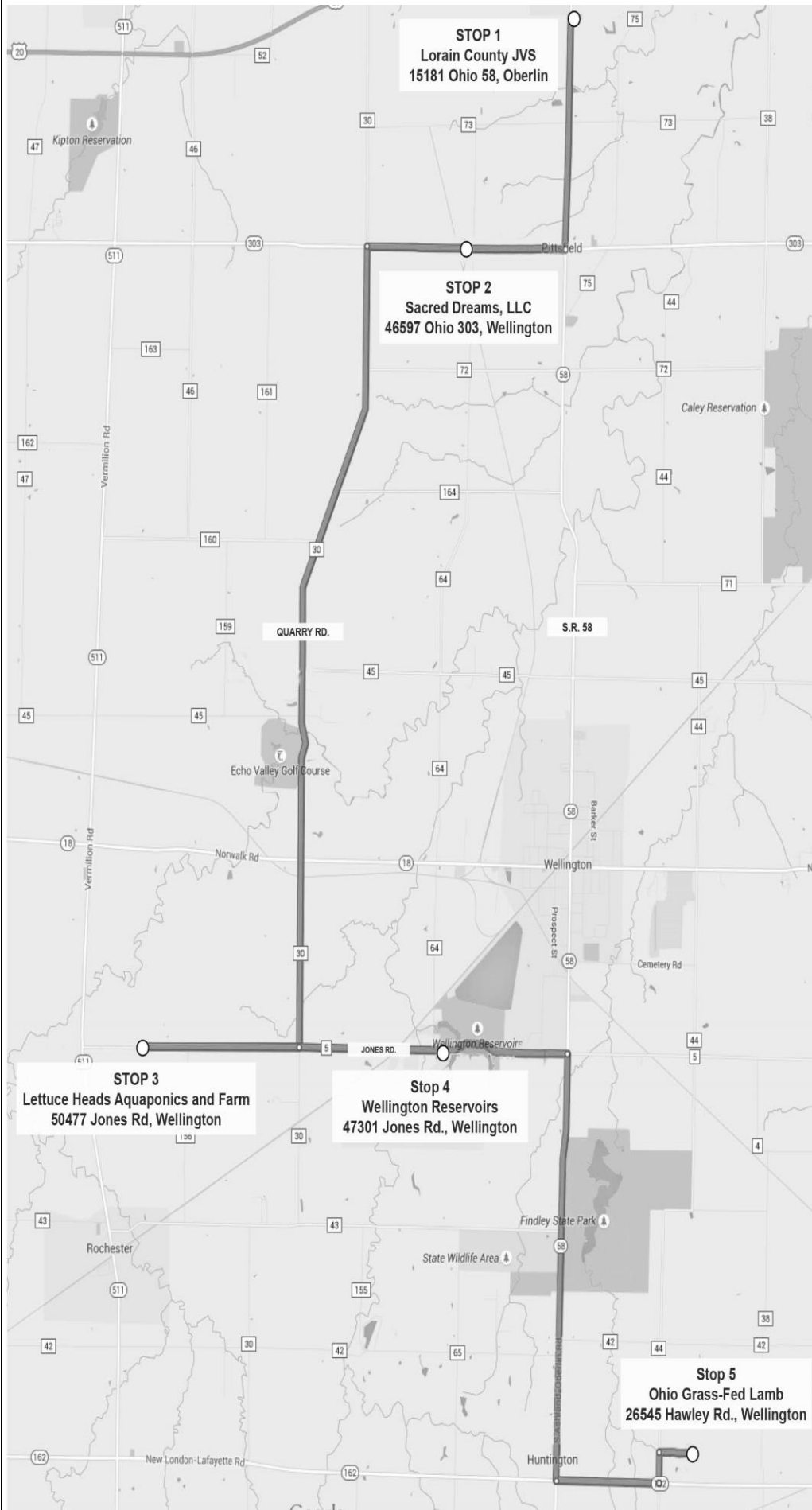
In early November, our lambs are taken a short distance to an Ohio state inspected butcher, where we work closely with our butcher to make sure that our lambs are processed according to our specifications. Throughout all of this, our animals are handled as gently and humanely as possible. In 2004, our farm enrolled in a conservation program overseen by the Lorain Soil & Water Conservation District and in 2010 we were awarded the *Conservationist of the Year Award*. This conservation program promotes sustainable farming practices that contribute to the health of our local rivers, lakes, and water supply.

Lorain Soil & Water Conservation District will have an informational table set up at this stop.



A poster of the door prizes available will be posted at all of the stops. Lorain County Farm Bureau is a member-based organization - Learn how you can become a member today! Farm Bureau volunteers will be at every stop to talk with you about current agricultural issues and Farm Bureau membership. You may also visit us at www.northcoastfarmbureau.org or call the office at 866-859-2415 or 440-877-0706.

DRIVING DIRECTIONS



STOP 1
Lorain County JVS
15181 Ohio 58,
Oberlin
Lorain County JVS is on the east side of Ohio 58.

STOP 2
Sacred Dreams, LLC
46597 Ohio 303, Wellington

Turn left onto Ohio 58 S
Turn right Ohio 303 W
Located on the south side of Ohio 303.

STOP 3
Lettuce Heads Aquaponics & Farm
50477 Jones Rd, Wellington

Head west Ohio 303 towards
Pitts Rd
Turn left onto Quarry Rd
Turn right onto Jones Rd
Located on south side of Jones Rd.

STOP 4
Ziegler Farms
47301 Jones Rd, Wellington

Head east on Jones Rd toward
Anderson Rd.
Located on south side of Jones Rd. just east of Pitts Rd.

STOP 5
Ohio Grass-Fed Lamb
26545 Hawley Rd, Wellington

Head east on Jones Rd toward
Ohio 58.
Turn right onto Ohio 58 S
Turn left onto Ohio 162 E
Turn left at the 1st cross street
onto Hawley Rd
Located on east side of road.